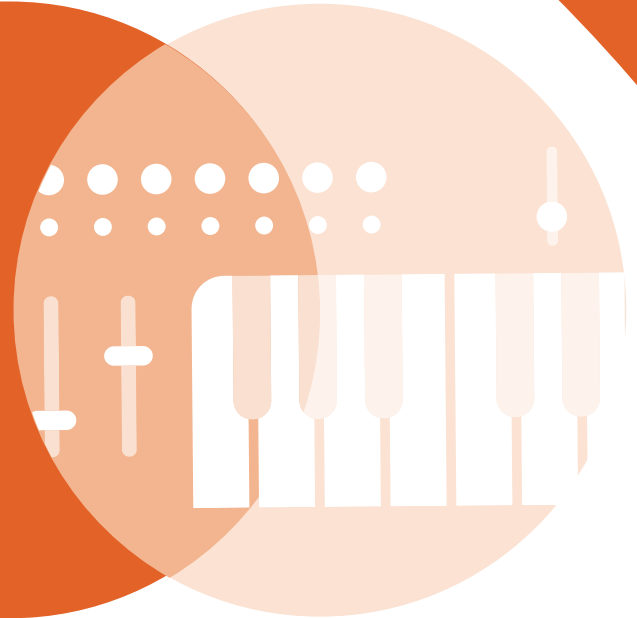


Music

EXPRESSIVE ARTS

What skills will my child develop?

- Sufficiently accurate performing skills in solo and/or group settings on two selected instruments or on one instrument and voice
- The ability to create original music using compositional methods and music concepts and music concepts when composing, arranging or improvising
- Deeper knowledge and understanding of the social and cultural factors influencing music
- Deeper knowledge and understanding of music and musical literacy by listening to music
- Identifying level-specific annotated music signs, symbols, concepts and styles
- Understanding the creative process and expressing him or herself through music
- Personal creativity and applying music concepts to personal practice
- Critical and analytical listening skills and evaluation for improvement



WHAT WILL MY CHILD EXPERIENCE DURING THE COURSE?

- Active and independent learning through self and peer evaluations, responding to feedback
- A blend of classroom approaches including practical and experiential learning; using music technology such as audio recordings, computer music programmes
- Collaborative learning: with others in multi-instrument groups; shared listening experiences; whole class discussion and exploration; group improvisation; curricular links with the expressive arts and languages
- Space for personalisation and choice: in research methodology, choice of pieces, composition style
- Applying learning
- Embedding literacy and numeracy skills: researching and presenting information; evaluating; communicating.

ASSESSMENT

- The course is assessed through a question paper (exam), an assignment and a performance, and will be graded A to D. The question paper and assignment will be marked by SQA and the performance will be marked by the school or college.
- The question paper is worth 40 marks and makes up 35% of the total assessment mark. Learners are played excerpts of music in different styles and then answer questions.
- The assignment is worth 30 marks and makes up 15% of the total assessment mark. It has two parts: composing a piece of music and reviewing the composing process.
- The performance is worth 60 marks and makes up 50% of the total assessment mark. Learners perform two pieces of music and each piece must be performed on a different instrument. They can use two instruments or one instrument and voice (singing). Each performance can be solo or in a group setting.

National 5 progresses onto Higher Music

For more detailed course information:

SQA: Music National 5: www.sqa.org.uk/sqa/45717.html

Education Scotland: www.education.gov.scot/nationalqualifications

Curriculum for Excellence Key Terms and Features Factfile:

www.education.gov.scot/parentzone/Documents/CfEFactfileOverview.pdf



the National Parent
Forum of Scotland

www.parentforumscotland.org

enquiries@parentforumscotland.org

[parentforumscotland](https://www.facebook.com/parentforumscotland)

[parentforumscot](https://twitter.com/parentforumscot)